

# "TURKEY" in Japan

The year 2010 is designated as Japan Year in Turkey.  
Here, we introduce many Turkish items popular in Japan.



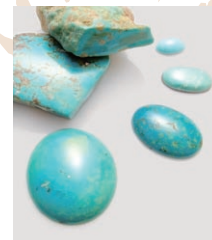
## "Turkish Ice-cream",

**Dondurma** : Japanese people love sticky and chewy texture, and this Turkish ice-cream, which stretches like chewing gum is no exception. Its chewiness comes from one of the common ingredients, salep, a flower made from dried tubers of species of orchids. When you buy Turkish ice-cream from vendors or from shop front, you'll also enjoy performances by the vendors to extensively stretch a mass of ice-cream and knocking it over.



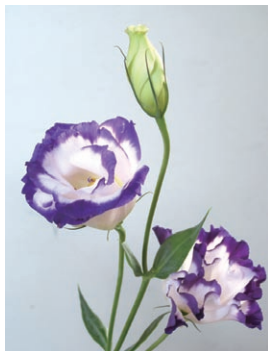
## "Turkish Stone", **Turquoise:**

Turquoise is a phosphate mineral mainly consisting of copper and aluminum, with the chemical formula of  $\text{CuAl}_6(\text{PO}_4)_4(\text{OH})_8 \cdot 4\text{H}_2\text{O}$ , and its hue varies from sky blue to blue green. Blue color comes from copper, and greenish color appears as part of aluminum (Al) is replaced by iron (Fe). Green color prevails with the increase of iron content. Turquoise is a kind of minerals produced in desert areas, and mainly came from Sinai Peninsula and Persia. The reason for its name "Turkish stone" even though it was not produced in Turkey was that turquoises from Persia and Egypt was brought to the Mediterranean region via Turkey by the Turkish merchants.



## "Turkish bellflower",

**Eustoma** : Eustoma, came from North America, is a name given to 3 species in the family Gentianaceae. This flower was first imported to Japan in 1930s, and has been becoming popular for last 10 years. This flower is commonly called, "Turkish bellflower" even though it has nothing to do with Turkey. The reason for the name is not clear, but one of the explanations is that its flower bud resembles the turban of the Turks, and blooms like bellflower.



## "Turkish Rugs", **Kilim :**

Hand-woven textile, called kilim, has been handed down from mothers to daughters of nomadic tribes for generations, and has been widely used as rugs and storage of grains and other stuff. It also helped them protect themselves from scorpions, centipedes, and other toxic insects, since they contain animal fur such as wool. The kilims are rich in design and color, as motives on kilims vary in regions. Moreover the wishes and prayers of the women are woven into them.



© Galata Bazaar  
<http://www.galatabazaar.com/>

On the cover design .....

## Fatih Sultan Mehmet Bridge



The 42nd International Chemistry Olympiad held in Japan was closed on July 28th, 2010, and the Olympiad flag was handed from Dr Noyori, Chairman of the 42nd IChO Organizing Committee, to the representative of the organizing committee for the next IChO to be held in Turkey from 9th to 18th of July, 2011. This extra edition of Catalyzer (No.12) bridges the 42nd IChO in Japan and the 43rd IChO in Turkey. Incidentally, many events symbolizing friendship between the two countries are held as part of Japan Year 2010 in Turkey.

In Istanbul, the capital city of Turkey, there are two suspension bridges connecting the Asian and European sides of the city. Especially, the Fatih Sultan Mehmet Koprusu, the newer of the two was built with Japanese cross-linking technology; even more, a new undersea tunnel is now under construction across the Bosphorus strait, also using Japanese technology.

We, the editors hope this "Catalyzer" will be "a linking bridge" for the friendship of the participants of this year's IChO.

## 42nd International Chemistry Olympiad

Catalyzer



Editor-in-chief : Haruo Hosoya

Editors : Shigeru Machida, Atsunori Mori, Hiroshi Seta, Daisuke Takeuchi, Akiko Utagawa, Yuki Yamasaki

Translator : Maiko Katayama Designer : Keiko Tahara

Contact: 42nd IChO Office

1-5 Kanda-Surugadai, Chiyoda-ku, Tokyo 101-0062, Japan E-mail: [contact@icho2010.org](mailto:contact@icho2010.org)

Website: <http://www.icho2010.org/>